



St Mary's School  
CAMBRIDGE

# International & Boarding

*The Cambridge school for girls*

[stmaryscambridge.co.uk/admissions/international](http://stmaryscambridge.co.uk/admissions/international)

Independent day and boarding school



# Welcome to St Mary's international and boarding

Located in the vibrant city of Cambridge, one of the safest cities in the UK, St Mary's provides the best of British education. We prepare your daughter for a future filled with opportunities, both in further study and in her chosen career. Our approach is not only academic but also global, equipping girls with the knowledge, confidence, and creativity to navigate both their professional and personal lives.

Our community is warm and welcoming. Boarders, starting from age 9, live in our well-equipped boarding house, where they are cared for by dedicated staff who make sure they feel safe and supported. As a parent myself, with my own daughter now a student at St Mary's, I understand how important it is for every girl to feel secure and happy during her school years.

**Discover first-hand what makes our school such an inspiring and unique place for your daughter.**



Scan to  
learn more

[stmaryscambridge.co.uk/visit](http://stmaryscambridge.co.uk/visit)

**Take an interactive tour**

[stmaryscambridge.co.uk/virtual](http://stmaryscambridge.co.uk/virtual)



Scan to  
learn more

At St Mary's, we believe in holistic learning. Central to our ethos are the HEART habits of Hard Work, Empathy, Adaptability, Responsibility, and Thoughtfulness, which we aim to instil in every student. This helps us prepare girls to thrive in a global world, ready to take on leadership roles, explore careers in STEM, the arts, business, and more.

We also place a strong emphasis on mental wellbeing. We are committed to promoting positive mental health through excellent pastoral care, ensuring that your daughter is emotionally supported throughout her time with us.

Although I am new to the role of Head, I have been part of the St Mary's community for over 10 years. This academic year, I have been continually inspired by the joy, energy, and laughter that fill our school. Every day, I see friendships flourishing, horizons expanding, and girls who are excited about learning.

I warmly invite you to visit us, either in person or online, to discover how we are shaping young women to lead fulfilling lives and make a meaningful impact on the world.



**Hannah Helliar**

Head





*“St Mary’s School, Cambridge is super supportive and incredibly responsive. They truly do care about each and every single applicant, offering their very best advice for each girl to make sure they excel and flourish at the School.”*

**Agent**

## Vision

### Empowering women for a better future

Inspired by our founder Mary Ward’s vision, “By God’s grace, women in time will do much”, St Mary’s School remains committed to empowering young women to overcome today’s challenges and seize the opportunities of tomorrow. Our legacy champions progress for women globally, rooted in a tradition that values strength, resilience, and purpose.

## Mission

### Fostering curious, compassionate, and confident leaders

As a Christian school grounded in Catholic heritage, our mission is to nurture young women who are not only academically curious and creatively driven but also compassionate individuals. Through the life and teachings of Mary Ward, we instil in each student the aspiration, confidence, and integrity necessary to create a positive impact on the world.



Learn more  
about our  
approach



Scan to discover the **top 10** reasons to choose a girls' school based on research

## Core Values

Our values are universal yet personal, reflecting both our commitment to holistic education and our Catholic foundation. These principles guide every aspect of life at St Mary's:

**Freedom** - Encouraging independent thought and open-mindedness.

**Joy** - Fostering a joyful, supportive community that celebrates achievements.

**Justice** - Upholding fairness and integrity in all interactions.

**Love** - Embracing kindness, understanding, and mutual respect.

**Truth** - Cultivating honesty, sincerity, and a love for knowledge.

These values resonate across a network of global schools, bringing together communities that share our mission.



Learn more about our ethos at:  
[stmaryscambridge.co.uk/ethos](https://stmaryscambridge.co.uk/ethos)



## Academic excellence

Excellent academic results in all subjects



Route to leading universities





# Child Visa sponsorship

We are licensed as a Tier 4 Sponsor by UK Visas and Immigration and offer sponsorship for child student visas for our full-time boarders.

**Full boarders: Ages 9 – 18.**

**Day pupils: Ages 4 – 11.**



Scan to read more about Visas

**93% of girls' school graduates say they were offered greater leadership opportunities**

than their peers at co-ed schools

**Goodman Research Group**

## Our location

Our schools and our boarding house are within a 5-minute walk from Cambridge Rail Station and a 15-minute walk to the centre of Cambridge.

### Airports

**London Stansted** – 30 minutes by train and 35 minutes by car

**London Luton** – 55 minutes by car

**London Heathrow** – 1 hour 20 minutes by car

### Trains

**London Kings Cross** – 45 minutes

**London Liverpool Street** – 70 minutes



**100%** of St Mary's pupils said they **are happy at school**, it is a safe place to be and they enjoy all that the School has to offer!  
**2024 Junior School pupil positivity survey**

---

## St Mary's approach

### A personalised path to success

In our small classes, your daughter will receive teaching that is tailored to how she learns best. This ensures she gets the most from every lesson. Along with our excellent pastoral care and tutoring, she will also grow socially and emotionally, ready to face life's challenges.

### Developing individual strengths

We know that every girl is unique, so we focus on helping your daughter develop her strengths while supporting any areas where she needs extra help. Our teaching is flexible and adapts to her learning style. We regularly check her progress and discuss it with both you and her.

### Every girl is unique

Our staff understand how important it is to help each student find and develop her own strengths. Your daughter will be supported in discovering her talents and will build the courage and resilience she needs to face challenges with confidence.

### A focus on mental wellbeing

We know that happiness is the key to success. Your daughter's mental and emotional wellbeing is a top priority. We are committed to creating a healthy environment where friendships, joy, and support are part of daily life. With excellent pastoral care and a dedicated wellbeing programme, we ensure that your daughter feels valued and supported every day.



This year we celebrated excellence and success at St Mary's Sixth Form, as **10% of students were offered places at Oxbridge.**

---

We have highly qualified staff, with many having undergraduate/postgraduate qualifications from Oxford, Cambridge and Russell Group universities, as well as acting as examiners for both GCSE and A Level.

We encourage and inspire every pupil, helping to develop their natural talents and interests through a broad and engaging curriculum.





*“Receiving my offer from Oxford was amazing! I was shocked, but I am delighted. I am so grateful for my time at St Mary’s – all my teachers were so dedicated and passionate”*

**Amelie A.**

Day sponsorship is available from age 4 to 11.

## Junior School (age 3 – 11)

### Early Years (up to age 5; Reception class)

We build strong foundations by developing key skills through practice, discussion, and reflection. This helps pupils gain responsibility, self-discipline, and independence, preparing them for the future.

### Pre-Prep (age 5-7; Years 1 and 2)

A focus on English, Mathematics, Science and Computer Science, balanced by Art, Geography, History, Religious Education and Personal, Social, Health and Economic (PSHE) studies.

### Prep (age 7-11; Years 3 to 6)

Core subjects are connected with other subjects, as pupils develop their preferred individual learning styles.

## Senior School (age 11 – 16)

### Option 1: Join in Year 7, 8, or 9

This gives your daughter up to five years to prepare for her GCSE exams, providing a solid foundation and plenty of time to adjust and excel.

### Option 2: Join in Year 10

This option is ideal for students who are prepared and ready to focus intensively on their 2-year GCSE programme.



Learn more about the Junior curriculum



Scan to see our Senior curriculum

Day students: age 3 to 8.

Day / Boarding students age 9 to 18.



## Sixth Form (age 16-18)

### Join in Year 12

This option provides focused study in your daughter's chosen subjects within the 2-year A Level programme, preparing her for university and future career development.

### 2024 GCSE results

**42%** 9-8 grades (A\* or A)

**76%** 9- 6 grades (A\* - B)

**89%** 9-5 grades (A\* - C)

### 2024 A Level results

**25%** of grades at A\*

**52%** of grades at A\* - A

**74%** of grades at A\* - B

**89%** of grades at A\* - C



Learn  
more



Scan to find out more  
about sports at Long Road

## Sports

Our Long Road Sports Ground, developed with Homerton College, University of Cambridge, offers excellent facilities, including:

- AstroTurf pitches for hockey, rugby, and football
- New netball and tennis courts
- A grass running track and athletics facilities

- Cricket nets for practice
- A pavilion with modern changing rooms and a kitchen
- Floodlit areas for evening activities

For those aiming higher, we offer specialist sports coaching in hockey, netball, rowing, cricket, tennis, and dance, helping girls reach their full potential.

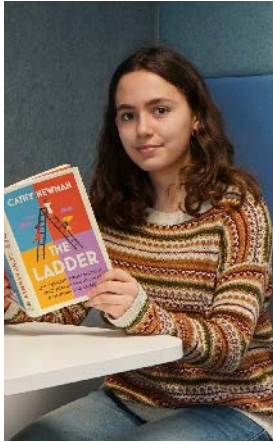


## Rowing excellence

The adventure continues at our Boathouse on the River Cam, in partnership with Homerton College and the City of Cambridge Rowing Club. Whether beginner or elite, your daughter can enjoy rowing on this iconic river. Our Senior School rowers were nominated for the British Rowing Awards' School Crew of the Year. At the Bedford and National Schools' Regattas, Year 9 crews placed 9th and 34th, and Year 10 crews finished 12th and 15th nationally.



Learn more  
about rowing



**100%** of St Mary's pupils said they like their teachers  
**Pupil positivity survey, Junior School**

## International student support

We offer excellent support to international students. We understand that learning in a new country can be challenging, and we are here to help your daughter succeed.

### English language tuition (English as an Additional Language - EAL)

We provide English as an Additional Language (EAL) lessons, included in the school fees, to help students improve their vocabulary, grammar, reading, writing, speaking, and listening skills.

- 6 x EAL lessons every two weeks  
Year 7 to 9
- 7 x EAL lessons every two weeks  
Year 10 and 11
- 5 x EAL lessons every two weeks  
Year 12 and 13

#### English as an Additional Language - EAL



Learn more

#### English language support (ELS)



Learn more

### English language support (ELS)

ELS lessons can be taken in place of one Modern Foreign Language throughout Senior School. These tailored lessons enable pupils to develop language skills which support learning in other subjects and provide a valuable foundation for progressing to GCSE level study in Years 10 and 11.

### EAL qualifications

Pupils can also prepare for internationally recognised EAL qualifications.

- Year 10: Cambridge English: First
- Year 11: Cambridge English: Advanced

*"I'm most grateful for the opportunities I have that I know other schools don't offer, and the great education and environment at St Mary's."*

**Student**

## IELTS qualification

International pupils joining in Sixth Form, or those who wish to improve on their current EAL grades, take the IELTS qualification in Year 12 or Year 13. This ensures it is valid for UK visa purposes when pupils embark on university studies. IELTS meets the English language requirements for English-medium university courses throughout the world.

## Accelerator course

The Year 9 EAL Accelerator Programme at St Mary's, Cambridge Senior School is designed for multilingual Year 9 students whose level of English language is at a lower competency range (CEFR A2/B1 borderline) but who show potential. It is a skills-based EAL course at Cambridge Preliminary B1 level with additional grammar and English-language literature reading comprehension, over 14 lessons per fortnight. In all other subjects, the students join the mainstream Year 9 classes.



Learn more



# Studying in Cambridge

## A world-renowned city for learning

St Mary's School is located in the heart of Cambridge, a city renowned for education, innovation, and world-changing ideas. Our Junior School, Senior School, Sixth Form, and boarding house are close to the historic Cambridge University Colleges, providing a vibrant and inspiring environment for learning.

## Learning beyond the classroom

In Cambridge, your daughter will have numerous opportunities to extend her learning beyond the classroom. She can visit museums like the Fitzwilliam, attend theatre performances, and work on tech projects with leading companies such as ARM. We are also closely located to the bio parks and bioscience industry, and students can gain valuable work experience at Addenbrooke's Hospital, part of Cambridge University Hospitals (CUH), which is one of the largest teaching hospitals in the United Kingdom. Through these connections, we ensure our students are well-prepared for careers in STEM.



---

## Sports and music in Cambridge

We take advantage of Cambridge's excellent facilities for both sport and music. Your daughter could row on the River Cam, thanks to our joint partnership with Homerton College, University of Cambridge, and Cambridge City Rowing Club, or train at the state-of-the-art Long Road Sports Ground, also in partnership with Homerton. For those interested in music, there are opportunities to perform at the University Hall on West Road.

## Living in Cambridge

Cambridge is a vibrant city full of rich cultural experiences. Sixth Formers often explore the city, embracing its art galleries, cafes, and theatres. Boarders enjoy a wide range of organised weekend activities, including punting on the River Cam, having cream tea at Grantchester Meadows, and visiting historic sites like Ely Cathedral. They also look forward to our annual Christmas meal at Peterhouse, the oldest college in the University of Cambridge, adding a magical touch to their boarding experience.

Additionally, we proudly sponsor the Cambridge Literary Festival, where selected students have the exciting opportunity to take the stage, introduce famous authors, and engage with influential figures from the media.



C **600** STUDENTS

C **20%** BOARDERS

**3-5 years** Early Years

**5-11 years** Junior

**11-16 years** Senior

**16-18 years** Sixth Form

**Academic year** – September to July

**Three terms** – Autumn, Spring, Summer



*“The support from teachers is great. We have tracking and monitoring with our tutor every week, and they talk to us about university applications. It’s helpful to have someone who can give us advice.”*

**Boarder**

## Education in the UK

**9:1** STUDENT TO TEACHER RATIO

### Boarders and Day students

Some independent schools offer only day or boarding options, but we have both. This creates a diverse school community with students from all over the world. Day students go home to their families after school, while boarders return to our boarding house.

### Tailored for girls

As a girls-only school, we specialise in educating girls. In the UK, single-sex schools are known for academic excellence. Our environment is designed to meet the needs of girls, allowing them to develop their talents without gender stereotypes.



*"I love boarding because everyone cares about one another and is respectful. We are very well looked after; therefore, we are happy. Also, the food is very nice."*

**Full time boarder**

# Boarding at Mary Ward House

## Welcome from our Head of Boarding

Boarding is available for national and international students from Year 5 (age 9) onwards, and all boarders live at Mary Ward House, our welcoming and comfortable boarding house.

Our experienced team makes sure every pupil feels at home quickly. We provide excellent pastoral care, ensuring the safety, wellbeing, and happiness of all our boarders is our top priority.

The boarding house is full of fun, friendship, and laughter, but also offers quiet, private spaces when needed. Our facilities are beautifully

furnished, with cosy bedrooms and spacious common areas.

I warmly invite you to visit us, either in person or online, to learn more about life at Mary Ward Boarding House.



Discover more about boarding at St Mary's



**Claire Elliott**  
Head of Boarding



## Mary Ward Boarding House

Located in a quiet, safe residential area, just a short walk from our schools, Mary Ward House accommodates over 90 students from Years 5 to 13. The modern boarding facilities include:

- Single rooms for older students and shared rooms for younger ones
- A kitchen for weekend use and a lively dining area
- Comfortable common rooms with TVs, a Nintendo Switch, and board games
- Wifi throughout
- A wellbeing room for health and relaxation

*“As a regular flexi-boarder, we feel she has got the “best of both worlds”. She has enjoyed ready companionship with other boarders and a sense of community. At the same time, she has had access to the familiarity and comfort of home...”*

**Parent**

## Boarding options

Boarders join us from over **15 different countries** including Nigeria, Hong Kong, France, Spain, Malaysia, UAE, Germany and the UK.

### Full boarding

Available from Year 5 upwards. Boarders stay at school during term-time and return home for half terms and holidays.

### Weekly boarding

Available from Year 5 upwards. Weekly boarders go home at the end of the school week and return on Sunday evening or Monday morning.

### Flexi boarding

Available from Year 5 upwards. This option is for occasional nights, a regular night each week, or for several weeks at a time.

### Twilight boarding

Available on weekdays (Mon-Fri), Twilight boarding offers flexible, high-quality after-school care, supported by our experienced boarding staff. It can be booked regularly or on an ad-hoc basis to suit each student's needs.

*“St Mary’s opens pupils’ minds to the world, helping them not only gain knowledge and understanding of it, but also reflect on culture and society, and contribute meaningfully to it.”*

**Alumna and Governor**

# Life as a boarder

## Week days

Our weekday routine ensures pupils find a healthy balance of academic study and leisure time.

<b>7.00am</b>	Pupils wake up
<b>7.15-7.45am</b>	Breakfast
<b>8.30am</b>	Join day pupils for registration
<b>4.00pm</b>	School day ends. Free time and a light snack at the boarding house
<b>4.45-5.45pm</b>	Supervised, supported homework for Years 5 to 9
<b>6.00pm</b>	Dinner for all
<b>7.00-9.00pm</b>	Prep for Years 10 to 13

## Staying connected with family

We encourage boarders to stay in regular contact with their family and friends. Our boarding staff also keep parents and guardians updated, ensuring a strong partnership.

## Weekends

Weekends have a more relaxed feel. Boarders can enjoy an early breakfast of fruit, cereal and toast, and a cooked brunch is served between 11am and 12 noon before afternoon activities and a more formal meal in the evening. Tech is handed in 10 minutes before bedtime for students in Year 7 to 11.

## Medical care

All boarders are registered with the School Medical Officer who runs a weekly clinic and can treat sickness and prescribe medicines and treatment as necessary. We have a team of over 20 staff, including boarding staff, who have been trained in mental health and wellbeing support. Our School Nurses are available daily to assist students in our on-site Medical Centre, between 8.00am-4.00pm. Outside these hours our boarding staff hold first-aid qualifications and are trained to administer medication. Emergencies are treated at Addenbrooke’s Hospital, a centre of excellence.



*“Boarding broadens our horizons by providing us with opportunities to appreciate others’ cultures and try out new activities.”*

**Former Head Boarder**

## Exciting adventures and activities

From fun craft sessions, dance, and cookery classes to activities like roller skating, ice skating, and escape rooms, there’s always something exciting happening for our boarders. We organise regular trips to go punting, bowling, or to enjoy the cinema and theatre. For something sweeter, bubble tea outings are a favourite!

On weekends, we offer even bigger adventures, such as trips to Thorpe Park, Birmingham’s Christmas Market, or exhibitions at London museums. Our Year 5-8 students also enjoy accompanied shopping trips around Cambridge. We also take exciting trips to places like the Harry Potter

Studios, making sure every weekend is filled with fun and new adventures.

All of these excursions are included in the boarding fee.



Each year, our boarders are treated to a three-course meal at the oldest college, Peterhouse, within the University of Cambridge.



Scan to see photos



In Girls' School Association (GSA) boarding schools, typically **80% of pupils go to the best universities** in the UK and internationally, including the US.

## Healthy and delicious meals

Our pupils enjoy a balanced, nutritious diet, with all meals made from scratch, including the sauces. We focus on providing clean, wholesome food that keeps them healthy and energised. We work with local suppliers from Cambridge and London to ensure fresh, high-quality ingredients.

We offer a wide variety of delicious hot dishes, salads, and fruit, along with regular snacks and drinks. All meals are clearly labelled, and we cater for medical or religious dietary needs whenever possible.

Boarders are expected to attend all weekday meals, and a register is taken.

**Weekdays:** Breakfast, lunch, snack at break time and after school.

**Weekends:** Brunch, lunch, and dinner are provided. On Friday and Saturday evenings, pupils can choose to cook, order food in, or eat out. Sixth Formers can also enjoy this option on Sunday evenings.

### We do not have formal Exeat weekends.

Boarders can arrange to visit their guardians or go home for the weekend, as long as written permission is provided to the Housemistress at least 48 hours in advance.





## International Admissions

Places for international students are offered based on an interview (in person or via Zoom), age-appropriate activities, assessments, and a reference from the current school.



Scan for full details

## Interviews

We aim to understand each pupil's potential. Interviews are conducted via Skype or in person and are a chance for us to hear about academic interests, as well as activities like sport, music, art, or community service. The interview is designed to feel more like a friendly chat!

# Applying to St Mary's

## Junior School Entry

### Preschool, Reception, Year 1

An informal assessment in person or via Zoom including puzzles, numbers and creative tasks.

### Year 2 to 6

Online assessments, interview (in-person or online) and creative writing.

## Senior School and Sixth Form Entry

### English as first language

**Year 7 to 10 entry:** Online adaptive assessments, interview (in-person or online) and creative writing.

**Year 12 entry:** UKiset and interview, usually via Zom.

### English as an additional language

Applicants will take the UKiset test. Subject to their performance, applicants are invited to interview, usually via Zoom.

### Sixth Form - key subjects

Pupils who plan to study certain subjects, undertake additional assessments:

- Art and Textiles: portfolio submission
- Drama and Music: written and practical assessments, in person or via Skype.
- Modern Languages: oral conversation in their chosen language(s), in person or via Skype.

*“As a boarder, I was taught many life skills, such as organisation and communication, which are valuable for success beyond academics. A good study environment is given and I also made many diverse friendships.”*

**Boarder**

We welcome both direct applications to our admissions team or applications made via an educational agent. We accept applications to all year groups (except Year 11 and 13).

## Next steps

Arrange your personal visit or to attend an open event  
[stmaryscambridge.co.uk/visit](https://stmaryscambridge.co.uk/visit) or call +44 (0)1223 224 167

Scholarships: [stmaryscambridge.co.uk/scholarships](https://stmaryscambridge.co.uk/scholarships)

Bursaries: [stmaryscambridge.co.uk/admissions/bursaries](https://stmaryscambridge.co.uk/admissions/bursaries)

Admissions FAQs: [stmaryscambridge.co.uk/admissionsfaq](https://stmaryscambridge.co.uk/admissionsfaq)

Assessment and sample papers: [stmaryscambridge.co.uk/assessment](https://stmaryscambridge.co.uk/assessment)

Fees: [stmaryscambridge.co.uk/fees](https://stmaryscambridge.co.uk/fees)

Application deadlines: [stmaryscambridge.co.uk/application](https://stmaryscambridge.co.uk/application)



Please apply via OpenApply  
[stmaryscambridge.openapply.com](https://stmaryscambridge.openapply.com)





# St Mary's School CAMBRIDGE

## ADMISSIONS

### St Mary's School

Bateman Street  
Cambridge CB2 1LY

+44 (0)1223 224 157

admissions@stmaryscambridge.co.uk

stmaryscambridge

St Mary's School, Cambridge

StMarysSchoolCambridge

stmaryscambridge.co.uk



### PARK AND RIDE

1. Babraham Park and Ride
2. Madingley Park and Ride
3. Cambourne
4. Trumpington Park and Ride
5. Milton Park & Ride
6. Saffron Walden

